

APPENDICES AND REFERENCES

Appendix A: Aviation charts and publications 40

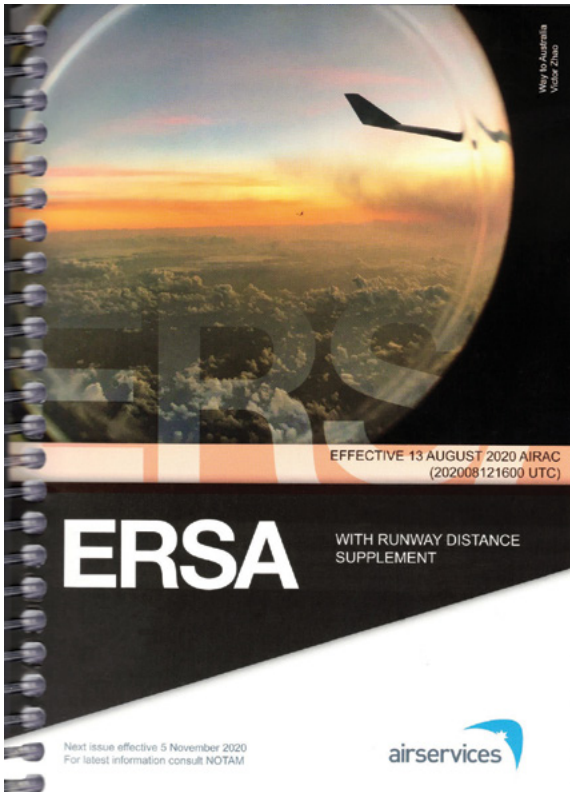
Acronyms and initialisms 43

Appendix A: Aviation charts and publications

Airservices Australia is the Commonwealth corporate entity that provides Australia's air navigation services. Airservices Australia publishes aviation maps and other relevant publications. The majority of the publications are available for free from the Airservices website: airservicesaustralia.com/aip/.

En Route Supplement Australia

Refer to: airservicesaustralia.com/aip/aip.asp.



ERSA PRD operations

The ERSA is part of the Aeronautical Information Package and contains details of:

- > prohibited, restricted and danger areas including standard activation times, refer to airservicesaustralia.com
- > aerodrome details for all registered and certified aerodromes in Australia, as well as details on many uncertified aerodromes
- > meteorological information service availability.

RPA operators are subject to applicable local noise abatement requirements (such as operating hour limitations and flight path/altitude restrictions) in the area of operation. Details of noise abatement procedures, including 'Fly Neighbourly' areas, are published in ERSA.



Times in the ERSA are published in Coordinated Universal Time (UTC), meaning they must be converted to the relevant Australian time zone.

The ERSA PRD extracts show that if you wished to operate in the restricted area designated R430A, categorised RA2, it might be permitted subject to approval by the controlling authority, CSIRO Tidbinbilla, which can be contacted on 02 6201 7940.



Restricted airspace extract from ERSA PRD-5

PRD AREA	05 NOV 2020			PRD - 4	
IDENT	STATUS	LIMIT	HOUR	AUTHORITY	ACTIVITY
R409B	RA3	3000 - 6000	NOTAM	(112) Rurex Pty Ltd	SURFACE FIRING RANGE
R415	RA3	SFC - 1900	NOTAM	(17) RAAF BCP Wagga	MILITARY NON-FLYING
R420F(NWX)	RA1	FL125 - FL300	NOTAM	(4) FLTCDR 453SQN NOWRA	MILITARY FLYING
R421A(NWX)	RA1	SFC - FL125	NOTAM	(4) FLTCDR 453SQN NOWRA	MILITARY FLYING
R421B(NWX)	RA1	2500 - FL125	NOTAM	(4) FLTCDR 453SQN NOWRA	MILITARY FLYING
R424	RA3	SFC - 3500	H24	(9) CRPCU	RADIO TELESCOPE
R430A	RA2	SFC - 3500	H24	(95) CSIRO Tidbinbilla	RADIATION HAZARD
R430B	RA2	3500 - 4500	H24	(95) CSIRO Tidbinbilla	RADIATION HAZARD

Controlling authority contact detail extract from ERSA PRD-14

(93)	08 8951 2025 or 08 8951 2010 or 0416 266 135 or 08 8951 2000
(94)	02 8782 7531
(95)	CSIRO Tidbinbilla Control Room 02 6201 7940
(96)	1300 785 033
(97)	07 4844 4000

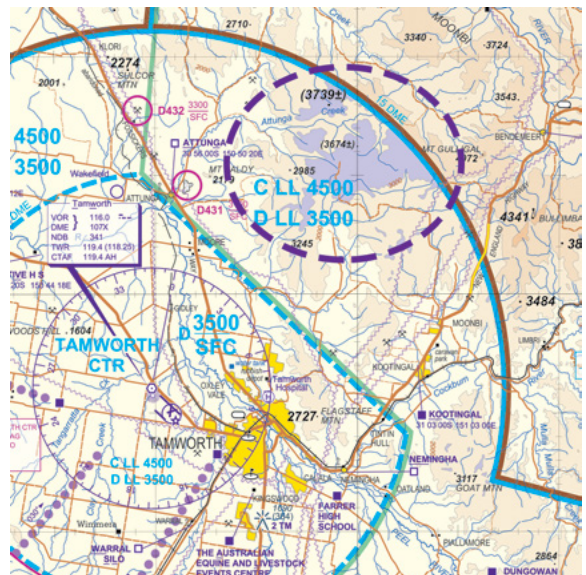
Visual Terminal Chart

The VTC is an aviation chart that can show airspace and aerodrome information including the location of danger areas, restricted areas, controlled airspace, overlying controlled airspace areas and aeronautical radio frequencies.

VTCs are available for aerodromes listed here:

airservicesaustralia.com/aip/aip.asp

In this example, the lower limit of controlled airspace (D) to the north-east of Tamworth is 3500 ft above MSL. Where the underlying terrain is less than 500 ft below this controlled airspace lower limit, it is shown in a purple tint. In fact, in this example, there are two spot heights – 3739 ft and 3674 ft – which are already in class D controlled airspace. At these locations, you may not operate at any height.



Visual Navigation Chart

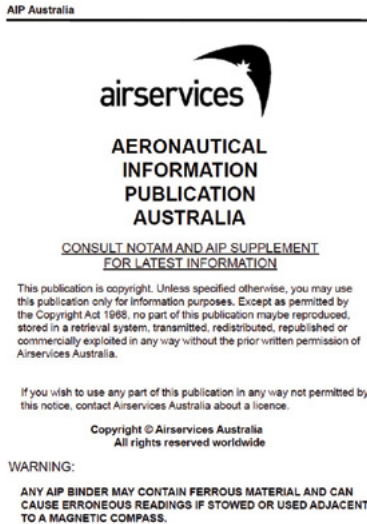
The VNC is an aviation chart which shows similar things to the VTC.

VNCs are available for the following aerodromes/ areas:

airservicesaustralia.com/aip/aip.asp

AIP

The Aeronautical Information Publication (AIP) has useful information regarding aeronautical radio operation, airspace and meteorology. It can be accessed at: airservicesaustralia.com/aip/aip.asp.



Aerodrome hours of operation

The extracts below are from the ERSA entry for Tamworth (YSTW), which sets out the aerodrome hours of operation.

ATS COMMUNICATIONS FACILITIES		
FIA	BRISBANE CENTRE	127.1 Circuit Area (Outside TWR HR)
ATIS	TAMWORTH	116.0 123.8 (2)
SMC	TW GROUND/DELIVERY	121.9 (3)
TWR	TAMWORTH TOWER (1)	118.25 (4) 119.4
(1)	Phone 6764 5271 [^] .	
(2)	or Phone 02 6764 5288	
(3)	Taxi clearance required on all TWY.	
(4)	HJ only.	

Tamworth tower (TWR) operates between 2100–1015 UTC from Monday to Friday and from 2200–0530 Saturday and Sunday. To obtain local time (in this case Eastern Standard Time, EST), add 10 hrs to the UTC times. This means that only between 0700 and 2115 (EST) Monday to Friday, and between 0830 and 1530 (EST) Saturday and Sunday is Tamworth's aerodrome and airspace controlled. Take careful note that the tower hours of operation (TWR HR) may change at short notice. You should therefore check the status of the aerodrome and its airspace by listening to the Aerodrome Terminal Information Service (ATIS) on the VHF radio frequency 123.8 MHz or by telephoning 02 6764 5288.

See airservicesaustralia.com/aip/aip.asp.

Locations of controlled aerodromes

- › All Australian capital city aerodromes are controlled.
- › There are other controlled aerodromes near the larger regional centres, and these can be found by referring to the VTCs and noting the areas marked as CTR (control zones).
- › A VTC will also show the lateral and vertical dimensions of a CTR, refer to: airservicesaustralia.com/aip/aip.asp.



You should assume an aerodrome is controlled unless you can positively establish otherwise.

Controlled aerodromes operate at specific times. Controlled aerodrome hours of operation are published in the AIP ERSA, refer to Aerodrome hours of operation.

AIP Australia 13 AUG 2020 FAC YSTW - 3

1. TWR HR: 2100-1015 UTC MON-FRI, 2200-0530 UTC SAT-SUN. (1HR earlier during HDS.)
2. Tamworth TWR provides combined TWR and APP CTL services within Class D airspace 4,500FT AMSL and BLW DRG TWR HR. CTC TWR for a clearance.
3. TWR HR may change at short notice, check status of airspace with ATS or Tamworth ATIS.
4. Outside TWR HR, Tamworth Class D airspace 4,500FT AMSL and BLW and Class C airspace BLW A085 becomes Class G.

The following is an explanation in plain English.

Acronyms and initialisms

AIP	Aeronautical Information Publication
ARN	Aviation Reference Number
ATSB	Australian Transport Safety Bureau
CASA	Civil Aviation Safety Authority
CASR	<i>Civil Aviation Safety Regulations 1998</i>
ERSA	En Route Supplement Australia
FPV	First-person view
MOS	<i>Part 101 (Unmanned Aircraft and Rockets) Manual of Standards 2019</i>
MSL	Mean sea level
NOTAM	Notice to airmen
PRD	Prohibited Restricted Danger
RA	Restricted airspace
ReOC	Remotely piloted aircraft operator's certificate
RePL	Remote pilot licence
RPA	Remotely piloted aircraft
TSIA	<i>Transport Safety Investigation Act 2003</i>
UTC	Coordinated Universal Time
VTC	Visual Terminal Chart
VNC	Visual Navigation Chart

Units

ft	feet
g	grams
m	metres
kg	kilograms
km	kilometres
NM	nautical miles



CASA National Headquarters

Aviation House **16 Furzer Street Phillip ACT 2606**
GPO Box 2005 Canberra 2601

131 757 | casa.gov.au

